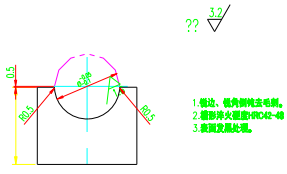
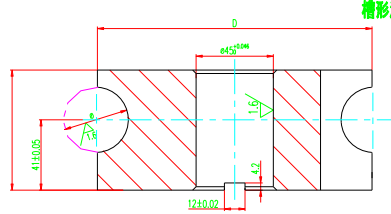


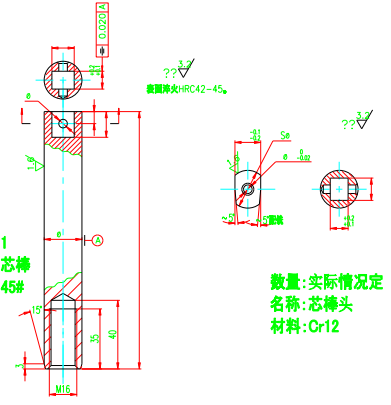
DW50NC(B) 模具图



1. 磨边、棱角倒钝处理
2. 槽形淬火硬度HRC42-45
3. 表面发黑处理

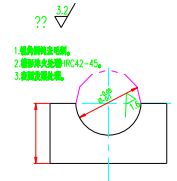


槽形淬火硬度HRC42-45

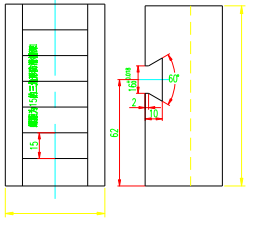


数量:1
名称:芯棒
材料:45#

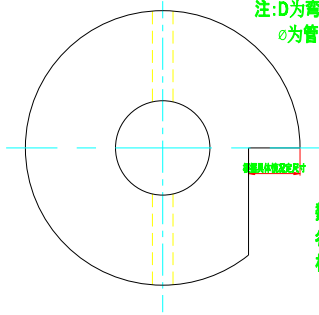
数量:实际情况
名称:芯棒头
材料:Cr12



1. 磨边、棱角倒钝处理
2. 槽形淬火硬度HRC42-45
3. 表面发黑处理

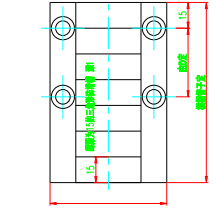


数量:1
名称:夹紧模
材料:45#

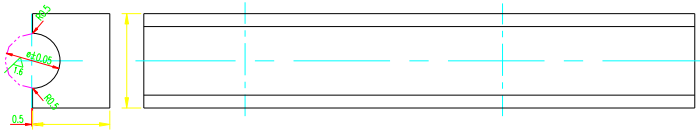


注:D为弯曲直径
φ为管材直径

数量:1
名称:弯管模
材料:45#



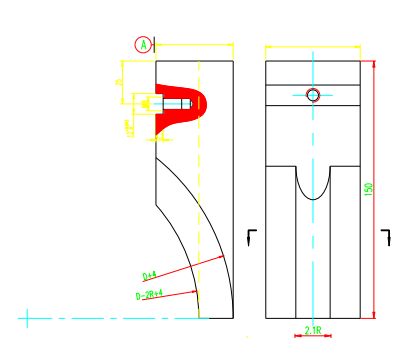
数量:1
名称:弯管模拼块
材料:45#



槽形淬火HRC45-48

注:D为弯曲直径
α为弯曲角度
φ为管材直径

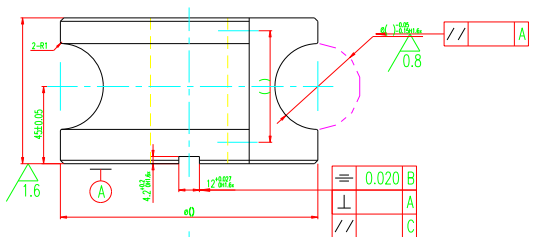
数量:1
名称:普通滑板模
材料:45#



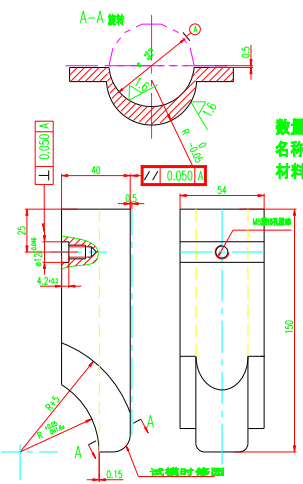
数量:1
名称:弯管模
材料:Cu

数量:1
名称:弯管模
材料:Cu

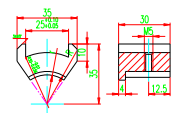
DW50NCBL 模具图



数量:1
名称:弯管模
材料:45#

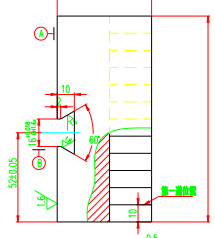
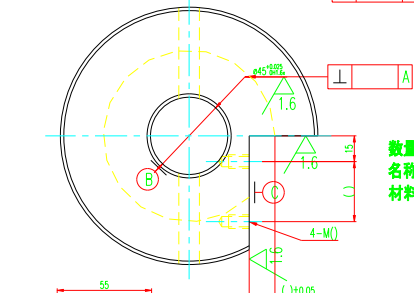


数量:1
名称:防皱模
材料:Cu



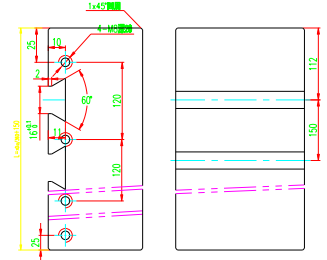
数量:3
名称:夹钳模
材料:45

技术要求
1. 调质处理硬度HRC28-32;
2. R面磨粉淬火硬度HRC45-48;
3. 表面发黑处理。



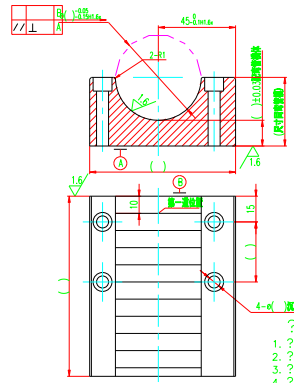
数量:1
名称:夹紧模
材料:45#

1. ???HRC28-32;
2. ???1X45?????
3. ?????????10?
4. ???HRC42-45;



数量:1
名称:轴推滑板模
材料:45#

1. ???1X45?????
2. ???HRC42-45;



数量:1
名称:拼块
材料:45#

1. ???HRC28-32;
2. ???1X45?????????
3. ?????????10?
4. ???HRC42-45;